

## ARTÍCULO ORIGINAL

### Management costs of febrile neutropenia in oncology patients in a Tertiary care Hospital Care in Colombia

### Costos del manejo de la neutropenia febril en pacientes oncológicos en un hospital de tercer nivel en Colombia

Mauricio Lema<sup>1</sup>, Beatriz E. Preciado<sup>1</sup>, Diana M. Quiceno<sup>1</sup>, Sara P. Mora<sup>1</sup>, Natalia Castaño<sup>2</sup>, Juan M. Reyes<sup>2</sup>

Received: 24/06/2021, Accepted: 07/12/2021  
Available online: 30/12/2021  
<https://doi.org/10.35509/01239015.808>

#### Abstract

To describe the clinical characteristics, resource utilization, and direct cost of febrile neutropenia (FN) in a healthcare institution in Colombia for patients seen between 2017-2019. **Methods:** A descriptive and retrospective study of a cohort of patients hospitalized due to FN. Costs were extracted from the review of medical records from diagnosis of FN until discharge or death, and official sources were used to estimate the cost. **Results:** Forty-four FN episodes were included. Median age was 61 years (IQR: 53-72). Solid tumors accounted for 68.8%. In first-line treatment were 14 (31.8%), same in proportion in adjuvant/neoadjuvant, and 5 (11.4%) in second-line. FN occurred in 15 (34.0%) high-risk patients. Mean LOS per episode was  $5.1 \pm 2.5$  days. All patients were discharged alive. The median overall cost was  $\$908 \pm \$769$  per episode, with hospital stay being the main driver-cost. **Conclusion:** FN occurred mainly in advanced-stage solid tumors and in low-risk group. Higher costs in this cohort were found in long length of stay and high-risk patients.

**Keywords:** Febrile neutropenia, neoplasms, Costs and Cost Analysis, Colombia.

#### Resumen

**Objetivo:** describir las características clínicas, la utilización de recursos y el costo directo de la neutropenia febril (FN) en una institución de atención sanitaria en Colombia para pacientes atendidos entre 2017 - 2019. **Métodos:** estudio descriptivo y retrospectivo de una cohorte de pacientes hospitalizados por FN. Los costos se extrajeron de la revisión de las historias clínicas desde el diagnóstico de la FN hasta el alta o la muerte y para estimar los costos se utilizaron fuentes oficiales. **Resultados:** se incluyeron 44 episodios de FN. La mediana de edad fue de 61 años (IQR: 53-72). Los tumores sólidos representaron el 68,8 %. En tratamiento de primera línea fueron 14 (31,8 %), igual en y adyuvantes/neoadyuvante y 5 (11,4 %) en segunda línea. La FN se produjo en 15 (34,0 %) pacientes de alto riesgo. La media de la LOS por episodio fue de  $5,1 \pm 2,5$  días. Todos los pacientes fueron dados de alta vivos. La mediana del costo total fue de  $\$ 908 \pm \$ 769$  por episodio, siendo la estadía en el hospital el principal generador de costos. **Conclusión:** la FN se produjo principalmente en tumores sólidos en estadio avanzado y en el grupo de bajo riesgo. En esta cohorte, en los pacientes de alto riesgo y con estadías prolongadas se encontraron costos más altos.

**Palabras clave:** neutropenia febril, neoplasias, economía, análisis de costos, Colombia.

#### Introduction

Febrile neutropenia (FN) continues to be an oncology emergency, which may result in serious consequences, such as complication infection,

organ failure, admission to intensive care unit (ICU), and highly associated to mortality [1-3]. Although the main cause of neutropenia corresponds to chemotherapy in cancer patients, there are other conditions that may lead to

<sup>1</sup> Clínica de Oncología Astorga, Clínica SOMA, Medellín, Colombia

<sup>2</sup> Pfizer S.A.S., Bogotá, Colombia

**Correspondence to:** DJuan Manuel Reyes. Pfizer S.A.S. E-Mail: [JuanManuel.Reyes@pfizer.com](mailto:JuanManuel.Reyes@pfizer.com)

neutropenia, such as solid tumors affecting the bone marrow; certain cases of lymphoproliferative neoplasms (e.g. granular lymphocytic lymphoma, hairy cell leukemia, and chronic lymphocytic leukemia); radiation if administered at various sites of active bone marrow proliferation; and less frequently, autoimmune, rare genetic, congenital, or monoclonal pathological etiologies [2].

The occurrence of FN varies considerably depending on the type of cancer, age, performance status, comorbidities, chemotherapy agents, and regimen, among other factors [4]. From the review of hospitalization due to FN, 53% of cases were solid tumors, and 42% were lymphoma or leukemia [3]. FN incidence has been reported in 60-85% of adults [5] with hematological cancers and chemotherapy, and in 23.8% of patients with lung cancer receiving platinum-based chemotherapy. However, in non-small cell lung cancer with squamous cell carcinoma patients, FN occurred in more than 50% [6].

FN was also reported in 9.2-12.9% of patients with breast cancer receiving adjuvant therapy, in which, hospitalization rates were 5.2-11.4% [7]. The frequency of FN in patients with non-Hodgkin lymphoma under treatment with chemotherapy was 9-47% [8]. The frequency may fluctuate depending on the condition of the population.

The main complications of neutropenia correspond to complicated infections, prolonged hospital stay, and death [9]. Moreover, FN may have a long-term clinical requiring adjustments in chemotherapy treatment, including dose reduction, delay in treatment, discontinuation of chemotherapy, switch to less toxic alternatives, or less effective treatment regimens, which can translate into decreased response and lower survival rates [10,11].

The episodes of FN in the United States are estimated to account for 5.2% of all cancer-related hospitalizations and 8.3% of cost from all cancer-related hospitalizations [12]. Forty-percent of FN events that required hospitalization had  $\leq 5$  days of stay, 42% had 6-10 days of days, 12% had 11-15 days of stay, and 6% had  $\geq 16$  days of stay [9]. One study showed that hospital stay is an important cost-driver of healthcare utilization and related

costs (76.8%), followed by antibacterial treatment (8.5%), laboratories (6.0%) and blood bank (5.9%) [13]. As such, the costs associated with FN have been estimated to vary depending on the type of cancer [14].

Direct costs of care for patients with cancer are significant and high for Colombian health care system [15]. This costs in cancer patients for some specified types have been described in previous published studies for Colombia [16], which includes treatment and side effects. One cost-effectiveness analysis in breast cancer have been estimated the cost FN, as adverse event of chemotherapy, it was \$1,567, with no breakdown of cost [17].

The scarce evidence available on incidence, risk factors, population, and economic impact of FN in Colombia and Latin American countries continues to be a shortcoming. A study was conducted, only in Colombia, assessing the epidemiology of FN cases in adult patients with hematological malignancy [5]. Due to the lack of data available on FN, the purpose of this study is to provide information related to the contribution of different cost component, as well as demographic and clinical factors associated with this condition, which have not been yet analyzed in detail in the country.

## Methods

### *Study Design and Patient Population*

This retrospective and descriptive study with a cohort of patients who reported FN episodes used data from Clínica SOMA, a healthcare institution in Medellín (Colombia), from 2017 to 2019. The study population consisted of all patients aged  $\geq 18$  years who were hospitalized with diagnosis of any type of cancer and FN. The date of hospitalization with diagnosis of FN was considered as index date. Patients were followed up until discharge from hospital or death, and FN episodes were classified as high-risk or low-risk according to the Multinational Association of Supportive Care in Cancer (MASCC) Risk Index score.

During this period, all medical resources associated to FN were measured and validated by clinical

experts according with institutional clinical recommendations from clinical practice guidelines. These were categorized according to type of service (i.e. hospital, antibiotic, therapeutic, and diagnostic test). Likewise, the epidemiological characteristics and type of tumor were obtained, and episodes were classified according to the identified cause and data associated with mortality.

Since a specific diagnostic code for FN does not exist, FN definition was made according to the Colombian Cancer Institute “absolute neutrophil count  $\leq$  500 cells/mL or  $\leq$  1,000 cells/mL, with a downward trend over 48 hours after measurement.” [15].

### Cost Data

The costs per episode were calculated by multiplying the number of units of each resource by the cost per unit. Only the services attributable to FN were included. Costs were reported using the local currency and converted to United States dollars (US \$), at the exchange rate 3,705 Colombian pesos per US\$, [19]. Direct cost was collected during the care in the inpatient settings.

### Data Source

The main source of data was the patients’ clinical records, including demographics, clinical data, and resource use per episode, while the cost per patient was valued according to the tariffs for paying the obligatory traffic accident insurance (SOAT) 2021 [20] and drug price information system(21), which were based on mean values of those datasets.

### Statistical Analyses

All sociodemographic, clinical, and cost variables were summarized using descriptive statistics according to their distribution, through measures of central tendency and measures of dispersion for quantitative variables and absolute and relative frequencies. For qualitative ones, they were summarized using frequency tables. These analyses were carried out for the all population and by subgroups. Measures of resources were analyzed using observed values and are reported as means and/or percentages.

## Results

### Patient demographics and disease characteristics

A total of 44 FN episodes were included in the study. The mean age of the patient population was 61 years (IQR: 53-72). None of the patients died during hospitalization. Table 1 shows demographics and cancer types. Most of patients belonged to the contributory regime. Solid tumors accounted for 68.8%, with colorectal (20.0%), breast (16.7%), and lung (13.3%) cancers being the most frequent within this group. In terms of oncology treatments, 14 (31.8%) patients were in first-line, 14 (31.8%) were in the adjuvant/neoadjuvant setting; and 5 (11.4%) were in second-line. All patients were discharged alive. According to MASCC score, 15 (34.1%) episodes occurred in the high-risk group, and 29 (65.9%) episodes occurred in the low-risk group. (Table 1 and Figure 1)

### Healthcare Utilization and Total Medical Costs

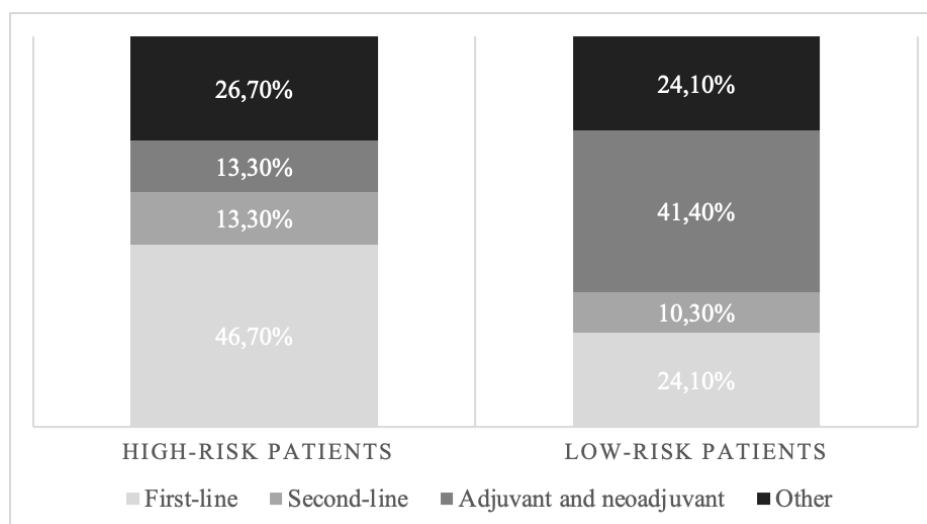
The hospital mean ( $\pm$  SD) of length of stay (LOS) was  $5.7 \pm 29$  days and, the mean cost ( $\pm$  SD) per FN episode was  $\$908 \pm 769$ . Six patients (13.7%) were admitted to the ICU, with a mean duration of 3.8 days (range: 3.0-5.0), contributing to LOS 17.4% of bed days. Patients with hematologic tumors have mean LOS  $6.0 \pm 3.4$  and mean cost of  $\$1,085 \pm 954$ , which was similar among patients with solid tumors, LOS  $5.5 \pm 2.7$  and mean cost of  $\$825 \pm 667$ . Within the risk groups, the cost was higher in high-risk patients ( $\$ 1,185 \pm \$ 1,016$ ) as compared to low-risk patients ( $\$ 765 \pm \$ 572$ ). The mean cost during adjuvant or neoadjuvant treatment was  $\$676 \pm 575$ , first-line  $\$929 \pm 879$ , second-line  $\$1,363 \pm 598$ , and other lines  $\$969 \pm 882$ .

Hospital stays (included ICU and ward) accounted for 66.8% of total cost. Laboratory tests accounted for 14.2%; blood bank, 3.0%; medication, 8.2%; diagnostic test, 4.8%; and physicians accounted for the remaining 3.0%.

**Table 1. Patient Demographics and Disease Characteristics**

Demographics/ Characteristic	No. of Patients (%)		
	Total	High-Risk Group	Low-Risk Group
<b>Sex</b>			
Women	23 (52.3)	8 (53.3)	15 (51.7)
Men	21 (48.7)	7 (46.7)	14 (48.3)
<b>Mean age (IQR)</b>	<b>61 years (IQR: 53-72)</b>		
<b>Cancer type</b>			
<b>Hematologic malignancies</b>	<b>14 (31.8)</b>	<b>7 (46.7)</b>	<b>7 (24.1)</b>
Non-Hodgkin lymphoma	10 (71.4)	6 (85.7)	4 (57.1)
Chronic lymphocytic leukemia	2 (14.3)	0 (0.0)	2 (28.6)
Hodgkin lymphoma	1 (7.1)	0 (0.0)	1 (14.3)
<b>Solid tumors</b>	<b>30 (68.18)</b>	<b>8 (53.3)</b>	<b>22 (75.9)</b>
Colon cancer	6 (20.0)	0 (0.0)	6 (27.3)
Breast cancer	5 (16.7)	0 (0.0)	5 (22.7)
Lung cancer	4 (13.3)	2 (25)	2 (9.1)
Stomach cancer	3 (10.0)	1 (12.5)	2 (9.1)
Cervix cancer	2 (6.7)	0 (0.0)	2 (9.1)
Pancreatic cancer	2 (6.7)	1 (12.5)	1 (4.5)
Rectum cancer	2 (6.7)	2 (25)	0 (0.0)
Synovial sarcoma	2 (6.7)	0 (0.0)	1 (9.1)
Anal cancer	1 (3.3)	1 (12.5)	0 (0.0)
Bone cancer	1 (3.3)	0 (0.0)	1 (4.5)
Leiomyosarcoma	1 (3.3)	0 (0.0)	1 (4.5)
Ovarian cancer	1 (3.3)	1 (12.5)	0 (0.0)

Describe patients demographics and disease characteristics included in the study



**Figure 1. Disease Treatment Based on MASCC Risk Group**

In respect of medication costs, the antifungal use was lower: It was given to 8 patients representing a low-cost antifungal agents under total cost. The hematopoietic growth factor used as treatment for FN was used only in one elderly patient at high risk. The most commonly used antibiotics were

cefepime hydrochloride, piperacillin/tazobactam, meropenem, and vancomycin (Table 2 and Table 3). The oncology treatments were not considered in the total cost due to the fact that they are not part of care of NF.

**Table 2. Direct Medical Costs**

	Mean	SD	Range
Hospital stay	\$607	\$588	\$152 - 2,331
Laboratory	\$130	\$100	\$21 - 478
Blood bank	\$80	\$60	\$13 - 252
Medication	\$74	\$67	\$0 - 331
Diagnostic test	\$43	\$100	\$0 - 607
Physicians	\$27	\$17	\$16 - 86
<b>Total</b>	<b>\$908</b>	<b>\$769</b>	<b>\$262 - 3,392</b>

The total direct medical cost of patient cohort of 44 patients are reflected per type of costs associated with FN event.

**Table 3. Direct Medical Costs and Length of Stay by MASCC Risk Group**

Length of stay, d			
High-risk	6.1	3.2	2.0 – 13.0
Low-risk	5.4	2.7	13.0 – 92.0
<b>Total costs</b>			
High-risk	\$1,185	\$1,016	\$312 - 3,392
Low-risk	\$765	\$572	\$271 - 2,946

Shows the total medical costs and length of hospital stay by MASCC Risk Group

## Discussion

This study shows the use of resources of FN, related to LOS in the hospital, administered antibiotics, antifungal, imaging, and laboratory and diagnostic tests and physicians, as well as demographics and clinical characteristics of this population. These occurred mainly in advanced-stage solid tumors and in MASCC low-risk patients. The overall mean total cost per FN episode was \$9497 ± \$763 with a mean LOS of 5.1 days. There was a negligible variation in cost and LOS estimates among different types of patients (by risk score group or type of cancer).

The main cost-driver was hospital LOS contrasting physician visits seen to be the lowest in estimating the cost of FN.

A systematic review that examined cost of FN among patients with lymphoma reported a cost estimate of FN in the United States, Singapore, Europe, Australia, Canada, and Spain. As expected, the cost varied largely among those countries from \$5,819 to \$13,823 (2013, US\$) [22]. These findings appear to be different from those of this study, since the cost represents less than half of the cost found in this study.

However, in all studies, the LOS in hospital was the main cost driver, which is consistent with the results of this study. The ratio of ward cost per unit among the rest of the components of total cost was relevant. In this study, the cost of hematopoietic growth factor was 11 times higher than the cost associated to hospital ward. However, in other countries, the hematopoietic growth factor was 2-3 times higher than ward cost [23,24], and even hospital ward was higher [25].

In the previous study of cost effectiveness for breast cancer in Colombia, the cost estimated for FN was between \$1,213 to \$2, 298 dollars for 2019 [17], which was marginally higher than the mean estimates established in this study, but those cost are in cost range reported (\$262 - 3,392). Other studies in Colombia, evaluated the clinical characteristics and outcomes in patients with FN mainly caused by chemotherapy [26,27]. In both studies, the most frequent of cases were in hematologic malignances (more than 70%) otherwise this study the patients with NF had the diagnosis of solid cancer. The LOS in hospital was also another variable with different behavior observed in this study, which reported median of LOS 24.8 - 26 days. Therefore, LOS can vary due specificities of those populations.

Overall LOS reported in this study was lower compared to other studies, the means were 8 to 9 days [12,28,29]. However, the study showed similar tendency among the type of cancer associated with longer LOS such as leukemias, non-Hodking lymphoma and Hodking lymphoma. The study was based on institutional guidelines of the hospital, the care in inpatient settings for high risk and low risk of complication in patient with NF is recommended by international guidelines [30,31].

Colombian studies have estimated that the direct medical costs for colorectal and breast cancer range from \$ 1,556 for early-stage disease to \$ 44,744 for advance-stage disease [32,33]. Accordingly, the FN episode cost accounted for 2% of total direct costs in advance stages, and up to 67% in early stages. The vast majority of cases in Colombia were in advanced stages of the disease [34,35], and therefore, FN costs comprised a marginal proportion of the healthcare costs of overall cancer.

There were some limitations to this study. Firstly, data was limited by that available in the patient's medical history. Consequently, data related to medical services provided outside of this care setting could not be obtained. Secondly, the sample size was relatively small, since the information is only part of an institution, limited to the clinical practice of such an institution. Thus, results may not be generalizable.

This study provides conservative estimates of the costs of a FN episode. Given that the costs of procedures were calculated from the description or unique code of healthcare procedures, the information in the medical records and tariff manuals, therefore, a misclassification of neutropenia patients as FN patients could not be carried out, and the costs used are benchmarks for negotiation in the country, although they may differ from those established in some institutions.

Issues raised in this paper have provided an understanding of the factors that drive FN costs stratifying care by risk group and type of cancer. This may be the starting point to design efficient care management programs and targeted strategies related to the cost of cancer care.

Further work should be done in evaluating the indirect and intangible costs, as this may represent a substantial burden for the society and families of patients, which also contributes to the economic burden of FN episodes.

Stratifying care by risk group may be helpful in identifying alternative strategies for FN treatment that may potentially result in cost savings to the healthcare system.

## Conclusion

FN occurred mainly in advanced-stage solid tumors and in MASCC low-risk patients. Higher costs in this cohort were found in long LOS and/or high-risk patients.

## Disclosures and declarations

Author contribution: All authors contributed to the study conception and design. Material preparation, data collections were performed by Mauricio Lema,

Beatriz Preciado and Diana Quiceno and Sara Mora, and the analysis was performed by Natalia Castaño and Juan Manuel Reyes. The first draft of the manuscript was written by Juan Manuel Reyes and Natalia Castaño and all authors commented on previous versions of the manuscript. All authors read and approved the final manuscript. Funding: This work was funded by Pfizer S.A.S. Conflicts of interest: Natalia Castaño and Juan Manuel Reyes are paid employees of Pfizer. Availability of data and material: This is an observational study. The XYZ Research Ethics Committee has confirmed that no ethical approval is required. Approval was granted by Comité Ética para Investigación Clínica de la Fundación CIC. Code application: (R project version). Ethical approval: This study was performed in line with the principles of the Declaration of Helsinki. Approval was granted by Comité Ética para Investigación Clínica de la Fundación CIC.

## References

1. Lynn J-J, Chen K-F, Weng Y-M, Chiu T-F. Risk factors associated with complications in patients with chemotherapy-induced febrile neutropenia in emergency department. *Hematol Oncol*. 2013 Dec;31(4):189-96.
2. Lustberg MB. Management of neutropenia in cancer patients. *Clin Adv Hematol Oncol* [Internet]. 2012 Dec;10(12):825-6. Available from: <http://www.ncbi.nlm.nih.gov/pubmed/23271355>
3. Kuderer NM, Dale DC, Crawford J, Cosler LE, Lyman GH. Mortality, morbidity, and cost associated with febrile neutropenia in adult cancer patients. *Cancer*. 2006 May 15;106(10):2258-66.
4. Lyman GH, Lyman CH, Agboola O. Risk models for predicting chemotherapy-induced neutropenia. *Oncologist* [Internet]. 2005;10(6):427-37. Available from: <http://www.ncbi.nlm.nih.gov/pubmed/15967836>
5. Madrid C, Díaz L, Combariza J, Gálvez K, Olaya V, Ramírez I, et al. Epidemiología de la neutropenia febril en pacientes adultos con neoplasia hematológica, en un período de 26 meses en el Hospital Pablo Tobón Uribe, Colombia. *Rev Chil infectología* [Internet]. 2013 Apr;30(2):195-201. Available from: [http://www.scielo.cl/scielo.php?script=sci\\_arttext&pid=S0716-10182013000200010&lng=en&nrm=iso&tlng=en](http://www.scielo.cl/scielo.php?script=sci_arttext&pid=S0716-10182013000200010&lng=en&nrm=iso&tlng=en)
6. Rikimaru T, Ichiki M, Ookubo Y, Matumoto K, Mimori Y, Sueyasu Y, et al. Prognostic significance of febrile episodes in lung cancer patients receiving chemotherapy. *Support Care Cancer* [Internet]. 1998 Jul;6(4):396-401. Available from: <http://www.ncbi.nlm.nih.gov/pubmed/9695209>
7. Link BK, Budd GT, Scott S, Dickman E, Paul D, Lawless G, et al. Delivering adjuvant chemotherapy to women with early-stage breast carcinoma: current patterns of care. *Cancer* [Internet]. 2001 Sep 15;92(6):1354-67. Available from: <http://www.ncbi.nlm.nih.gov/pubmed/11745211>
8. Scott S. Identification of cancer patients at high risk of febrile neutropenia. *Am J Health Syst Pharm* [Internet]. 2002 Aug 1;59(15 Suppl 4):S16-9. Available from: <http://www.ncbi.nlm.nih.gov/pubmed/12166033>
9. Lyman GH, Kuderer NM. Epidemiology of febrile neutropenia. *Support Cancer Ther* [Internet]. 2003 Oct 1;1(1):23-35. Available from: <http://www.ncbi.nlm.nih.gov/pubmed/18628128>
10. Segal B., Freifeld A., Baden L. Prevention and treatment of cancer-related infections. *J Natl Compr Cancer Netw*. 2008;6(2).
11. Schwenkglenks M, Jackisch C, Constenla M, Kerger JN, Paridaens R, Auerbach L, et al. Neutropenic event risk and impaired chemotherapy delivery in six European audits of breast cancer treatment. *Support Care Cancer* [Internet]. 2006 Sep;14(9):901-9. Available from: <http://www.ncbi.nlm.nih.gov/pubmed/16622653>
12. Tai E, Guy GP, Dunbar A, Richardson LC. Cost of Cancer-Related Neutropenia or Fever Hospitalizations, United States, 2012. *J Oncol Pract*. 2017 Jun;13(6):e552-61. <https://doi.org/10.1200/jop.2016.019588>
13. McCullagh L, O'Brien C, Walsh C, Dempsey O, Barry M. A micro-costing of the inpatient management of febrile neutropenia in the Irish health care setting. *Value Heal*. 2013;323-636.
14. Lyman GH, Kuderer N, Greene J, Balducci L. The economics of febrile neutropenia: implications for the use of colony-stimulating factors. *Eur J Cancer* [Internet]. 1998 Nov;34(12):1857-64. Available from: <http://www.ncbi.nlm.nih.gov/pubmed/10023306>
15. Salazar L, Benavides M, Murcia EM. Actuar político para el control del cáncer en Colombia. *Rev Gerenc y Políticas Salud*. 2018;17(35).
16. Cancerología CW-RC de, 2016. La atención del cáncer desde la perspectiva de la sostenibilidad financiera del Sistema General de Seguridad Social en Colombia. *revistacancercol.org* [Internet]. 2016 [cited 2021 Nov 3]; Available from: <https://www.revistacancercol.org/index.php/cancer/article/download/244/101>
17. Rojas L, Rosselli D. Cost-Effectiveness Analysis of Genomic Prolong in Early Breast Cancer in Colombia María Rojas-Reyes Fundación Cardioinfantil Instituto de Cardiología: Fundación Cardioinfantil Instituto de Cardiología. 2021 [cited 2021 Nov 3]; Available from: <https://doi.org/10.21203/rs.3.rs-264520/v2>

18. Instituto Nacional de Cancerología. Guía de práctica clínica para el diagnóstico y tratamiento de las infecciones bacterianas y micóticas en pacientes oncológicos mayores de 15 años con neutropenia febril posquimioterapia de alto riesgo. Bogotá D.C. Colombia: Instituto Nacional de Cancerología; 2013.
19. Banco de la República de Colombia. Tasa Representativa del Mercado (TRM - Peso por dólar). 2019;
20. Consejo Nacional de Seguridad Social en Salud. Manual Tarifario SOAT. 2021;
21. Ministerio de Salud y Protección Social de Colombia. Sistema de información de precios de medicamentos -SISMED. 2017.
22. Wang XJ, Lopez SE, Chan A. Economic burden of chemotherapy-induced febrile neutropenia in patients with lymphoma: A systematic review. Vol. 94, *Critical Reviews in Oncology/Hematology*. Elsevier Ireland Ltd; 2015. p. 201-12.
23. Lathia N, Isogai PK, De Angelis C, Smith TJ, Cheung M, Mittmann N, Hoch JS, Walker S. Cost-effectiveness of filgrastim and pegfilgrastim as primary prophylaxis against febrile neutropenia in lymphoma patients. *J Natl Cancer Inst*. 2013 Aug 7;105(15):1078-85. doi:10.1093/jnci/djt182.
24. Whyte S, Cooper KL, Stevenson MD, Madan J, Akehurst R. Cost-effectiveness of granulocyte colony-stimulating factor prophylaxis for febrile neutropenia in breast cancer in the United Kingdom. *Value Health*. 2011 Jun;14(4):465-74. doi:10.1016/j.jval.2010.10.037.
25. Lyman GH, Lalla A, Barron RL, Dubois RW. Cost-effectiveness of pegfilgrastim versus filgrastim primary prophylaxis in women with early-stage breast cancer receiving chemotherapy in the united states. *Clin Ther*. 2009 May;31(5):1092-104. Doi: 10.1016/j.clinthera.2009.05.003.
26. Peña TA, Rojas JDP, Benavidez REB, Gómez TMS, Cadavid DCR, Ávila DA, et al. Características de los pacientes adultos con neutropenia febril en un hospital universitario (Medellín, 2012-2016). *Med UPB [Internet]*. 2019 Dec 15 [cited 2021 Nov 4];38(2):108-13. Available from: <https://revistas.upb.edu.co/index.php/medicina/article/view/586>
27. Cataño-Toro D, Marín-Medina DS, Rivera J, Martínez JW, Sánchez-Duque JA, Martínez-Muñoz M, et al. Neutropenia febril asociada a quimioterapia en pacientes con neoplasias hematológicas de un centro de referencia en Colombia: características clínicas y desenlaces. *Rev Salud Uninorte [Internet]*. 2019 [cited 2021 Nov 4];35(2):205-20. Available from: [http://www.scielo.org.co/scielo.php?script=sci\\_arttext&pid=S0120-55522019000200205&lng=en&nrm=iso&tlng=es](http://www.scielo.org.co/scielo.php?script=sci_arttext&pid=S0120-55522019000200205&lng=en&nrm=iso&tlng=es)
28. Dulisse B, Li X, Gayle JA, Barron RL, Ernst FR, Rothman KJ, et al. A retrospective study of the clinical and economic burden during hospitalizations among cancer patients with febrile neutropenia. *J Med Econ*. 2013 Jun 12;16(6):720-35. Doi: 10.3111/13696998.2013.782034.
29. Zhou YP, Jin J, Ding Y, Chee YL, Koh LP, Chng WJ, et al. Direct costs associated with febrile neutropenia in inpatients with hematological diseases in Singapore. *Support Care Cancer*. 2014 Jun 28;22(6):1447-51. Doi: 10.1007/s00520-013-2055-5.
30. Aguado JM, Cruz JJ, Virizuela JA, Aguilar M, Carmona A, Cassinello J, et al. Management of Infection and Febrile Neutropenia in Patients with Solid Cancer. *Enferm Infecc Microbiol Clin*. 2017;35(7):451-60. Doi: 10.1016/j.eimc.2015.06.005.
31. Klastersky J, de Naurois J, Rolston K, Rapoport B, Maschmeyer G, Aapro M, et al. Management of febrile neutropenia: ESMO clinical practice guidelines. *Ann Oncol*. 2016;27:v111-8. Doi: 10.1093/annonc/mdw325.
32. León E, Gamboa Ó, Lozano T, Gamboa C, Gil M, Fuentes J. Estudio de costo de la enfermedad en pacientes con cáncer de colon y recto en Colombia. *Rev Colomb Cancerol*. 2013 Dec;17(4):184.
33. Gamboa Ó, Buitrago LA, Lozano T, Dieleman S, Gamboa C, Guzmán ÉL, et al. Costos directos de la atención del cáncer de mama en Colombia. *Rev Colomb Cancerol*. 2016 Apr;20(2):52-60. <http://dx.doi.org/10.1016/j.rccan.2016.02.003>
34. Cuenta de Alto Costo (CAC). Situación del cáncer en la población adulta atendida en el SGSSS de Colombia 2019. 2020.
35. Cuenta de Alto Costo (CAC). Situación del cáncer en la población adulta atendida en el SGSSS de Colombia 2020. 2021.